



**DERCHI**  
SAFE FOR BELOVED HOME



GUANGDONG DEJIYOU PIN DOORS AND WINDOWS CO., LTD

CHINA HEADQUARTERS: 19, SHENKE CHUANGZHI VALLEY, SHISHAN TOWN, NANHAI DISTRICT,  
FOSHAN CITY, GUANGDONG PROVINCE

**wechat/whatsapp: +8615878811461**  
**www.derchidoor.com**

**2024**  
E-CATALOG

# ABOUT US

With 15 years of experience, Guangdong Dejiyoupin Doors and Windows Co.,Ltd is one of top 10 manufacturers for all kinds of aluminum windows and doors. Posses a production base of 70,000 m<sup>2</sup> and 600+ staff, ensure fast and high-quality productivity. We boast an annual output of 400,000 m<sup>2</sup> and 200,000+ successful projects. Certified by NFRC, CE, AS2047, CSA, and ISO9001, we served 100+ countries. Our 100+ patents reflect our product innovation and R&D capability. We will provide more customers with better products and services in the future.





# PRODUCTION BASE

with 4.0 intelligent automatic production line



**75K** sq.ft  
production base



600+ Staffs will serve you



20+ experts R&D team



20000+successful cases



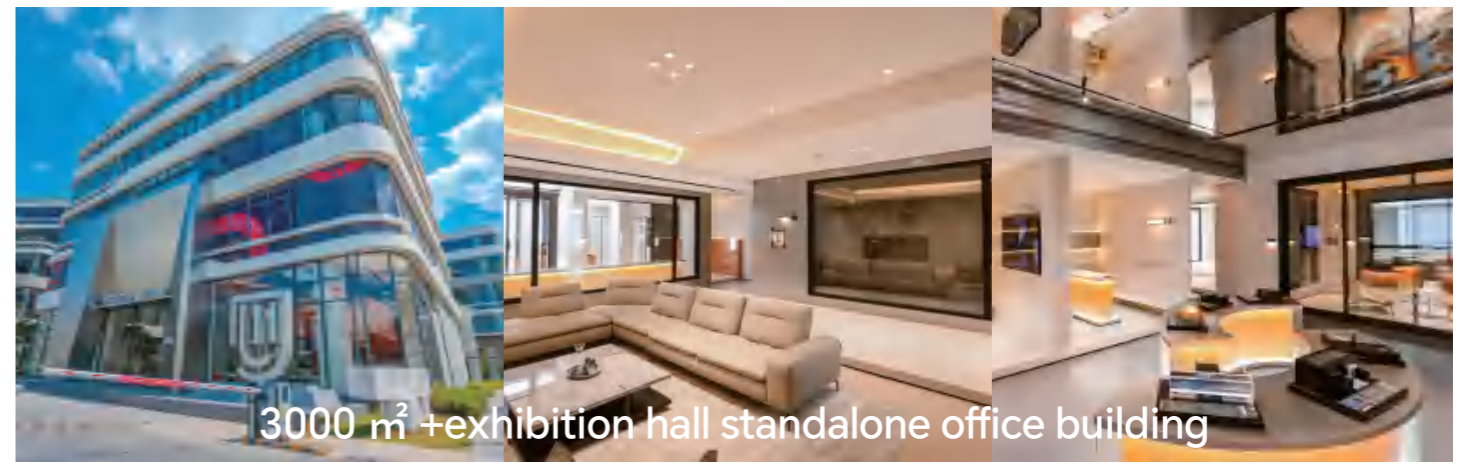
Annual output of  
**4.3 Million** sq.ft



Doors&windows Laboratory



**700+**  
distributors



3000 m<sup>2</sup> +exhibition hall standalone office building



# CERTIFICATES OBTAINED

Our products have passed NFRC, AS2047, CE, ISO9001 and various product test reports. We have got nearly 100 patents, The "Six - point lock" is one of the most prominent of our technical strength



■ NFRC



■ AS2047



■ CE



■ ISO9001



■ NFRC U value test report



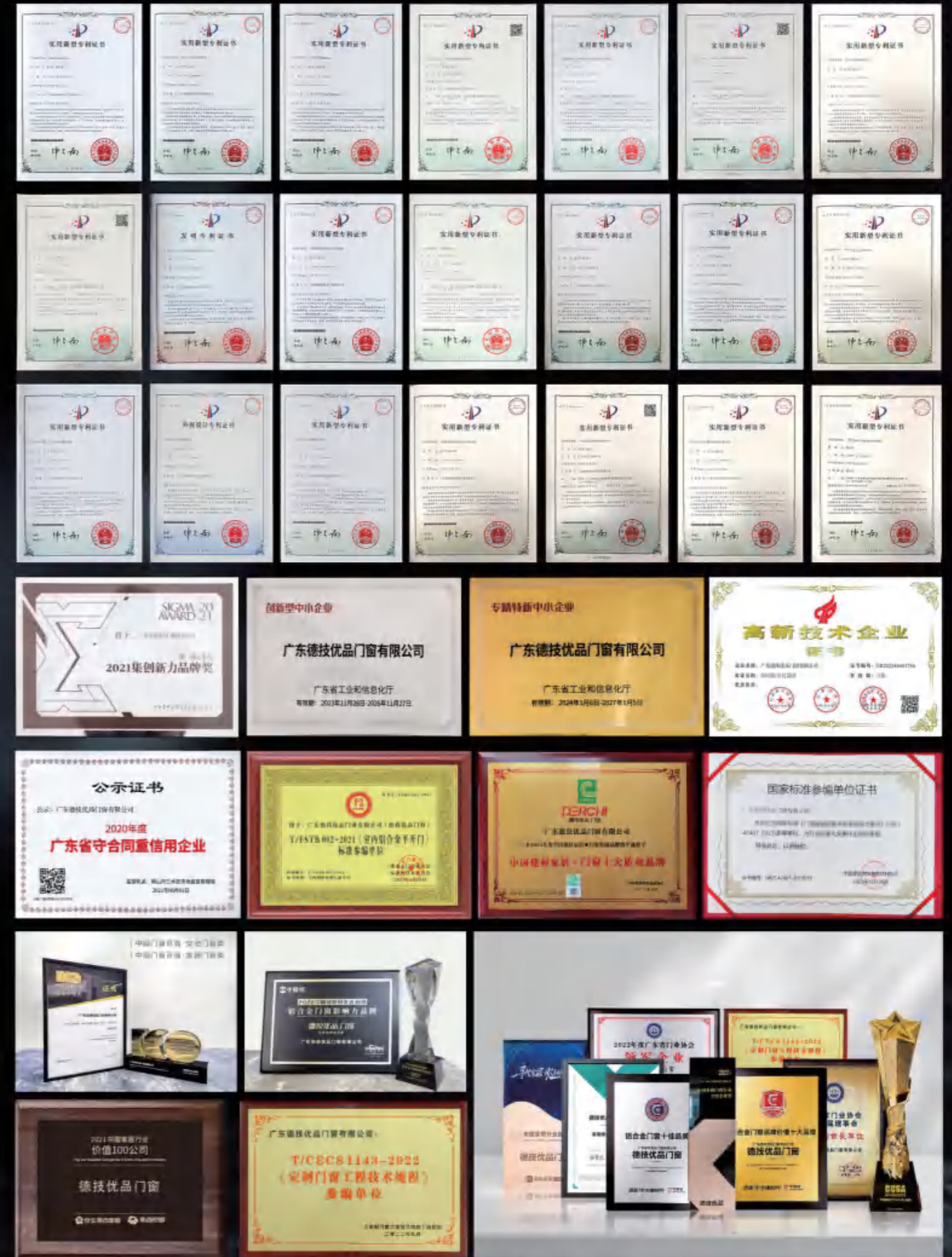
■ CSA Authentication



■ Sunglas SGCC Certificate



■ Test Report



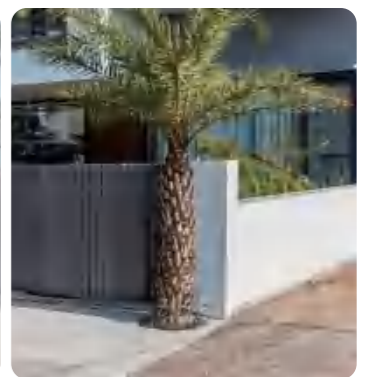
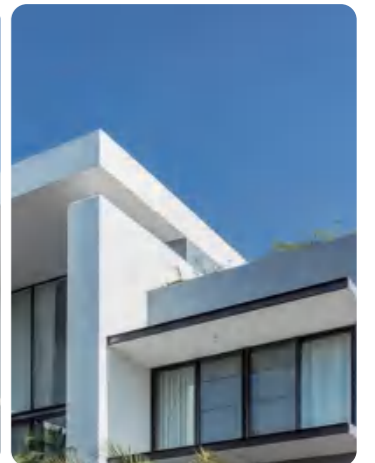


# OUR PROJECTS

We have successful cases in 100 countries around the world

## WHY CHOOSE US ?

- 15+years of experience in aluminum windows and doors
- 70,000+ m<sup>2</sup> factory area, 4000 m<sup>2</sup> showroom with 600+ employees
- 400,000+ m<sup>2</sup> annual output and 200,000+ successful cases
- Authorized by NFRC, CE, AS2047, CSA, and ISO9001
- 100+ national patents including invention patent, appearance patent, design patent
- 50+ honors praised by the industry
- 20+ experts R&D team
- 700+ distributors, trade with customers more than 100 countries
- Cooperate with outstanding raw material and hardware brands all over the world
- 100% full inspection before shipment
- One-stop customer service from ordering to shipment





# RELIABLE SUPPLIERS

Strictly select high-quality suppliers and form strong alliances



Germany HOPPE Hardware



Haida Rubber strip



German Hardware



Chinese Brand Blinds



Germany GU Hardware



Germany Roto Hardware



Italy Giesse Hardware



America CALDWELL



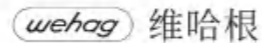
Germany Kerssenberg



RUIYIDE Rubber strip



Britain PAG Hardware



Wehag Hardware



BAIYUN YILE



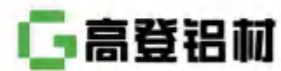
German Sealing Strip



LSMA Hardware



XYG Glass



Gaodeng Aluminum



Chengdu GUIBAO



# CONTENTS

## ALUMINUM THERMAL BREAK CASEMENT WINDOW SERIES

---

<b>63</b> Casement Window	016
<b>S6</b> Casement Window	017
<b>S9</b> Casement Window	018
<b>Y100</b> Casement Window	019
<b>R8Y</b> Casement Window	020
<b>K9Y</b> Casement Window	021
<b>E5N</b> Inward opening Window	022
<b>E4N</b> Inward opening Window	023
<b>E6N</b> Inward opening Window	024
<b>K5N</b> Inward opening Window	025
<b>T1</b> Hung Window	026

## ALUMINUM SLIDING WINDOWS/SLIDING DOOR SERIES

---

<b>E2T</b> Sliding Window	028
<b>E5T</b> Sliding sealing Window	029
<b>G41</b> Sliding Sealing Window	030
<b>G46</b> Slide and Tilt window	031
<b>Q3</b> Middle narrow Sliding door	032
<b>Q5</b> Sliding door	033
<b>135F</b> Sliding door	034
<b>143</b> Sliding door	035
<b>Q15</b> Thermal break Sliding door	036
<b>103</b> Extremely narrow Hanging door	037

## ALUMINUM SWING DOOR SERIES

---

<b>P50</b> Swing door	039
<b>P103</b> Interior Swing door	040

## ALUMINUM FOLDING DOOR SERIES

---

<b>78</b> Thermal break Folding door	041
<b>80</b> Thermal break Folding door	042
<b>93</b> Thermal break Folding door	043
<b>Z3</b> Pivot door	044

## ALUMINUM SUNROOM / SKYLIGHT SERIES

---

<b>150</b> Curtain wall series	046
<b>120</b> Series Sunrom	047
<b>138</b> Series Sunrom	048
<b>150</b> Series Sunrom	049
<b>Skylight</b>	050

## OTHER SERIES

---

<b>Shower room Series</b>	051-052
<b>Entrance Door Series</b>	053-054
<b>Automatic garage door</b>	055-056
<b>Aluminum Shutter</b>	057-058





# 63

## Crank out Window



### PRODUCT PARAMETES

Water tightness	650 <sub>pa</sub>
Air tightness	1.8 <sub>m<sup>3</sup>/(m·h)</sub>
Wind pressure resistance	4.5K <sub>pa</sub>
Sound insulation performance	35 <sub>dB</sub>
U-Factor(U.S./1-P)	0.32
SHGC	0.25

**Glass:** Double Tempered Glass with argon ags  
5mm+20A+5mm  
(PVDF Aluminum Strip Between double glass)

**Profile:** 6063-T5 aluminum profile

**Profile Thinckness:** 1.5MM

**Frame width:** 63MM

**Handle:** WEHAG Handle in Black and Sliver

**Hinge:** WEHAG Hinge

**Lock point:** Black Six Point Lock(Invention patent)

**Insulation strip:** Standard BAIYUNYILE insulation strip

**Opening Way:** Outward Opening / Awning

**Optional package:** New 48 Pack/New 88 Pack

**Sealing material:** EPDM rubber strip

**Available Size:** Opening Panel ( Width:350-700/Height:400-1600)

### PRODUCT PROCESS

· Process of applying cross-sectional adhesive at a 45° angle to the outer frame and glass fan





## S6

### Casement Window



#### PRODUCT PARAMETES

Water tightness	700 <sub>pa</sub>
Air tightness	1.2 <sub>m³/(m·h)</sub>
Wind pressure resistance	5K <sub>pa</sub>
Sound insulation performance	35 <sub>dB</sub>
U-Factor(U.S./1-P)	0.27
SHGC	0.22

**Glass:** Double Tempered Glass with argon gas  
5mm+27A+5mm  
(PVDF Aluminum Strip Between double glass)

**Profile:** 6063-T5 aluminum profile

**Profile Thickness:** 1.8MM

**Frame width:** 82MM

**Handle:** WEHAG Handle in Black and Silver

**Hinge:** WEHAG Hinge

**Lock point:** Black Six Point Lock(Invention patent)

**Insulation strip:** Standard BAIYUNYILE insulation strip

**Opening Way:** Outward Opening / Awning

**Optional package:** New 48 Pack/New 88 Pack

**Sealing material:** EPDM rubber strip

**Available Size:** Opening Panel ( Width:350-700/Height:400-1600)

#### PRODUCT PROCESS

- Process of applying cross-sectional adhesive at a 45° angle to the outer frame and glass fan
- Whole frame two-component injection molding process
- Glass glue filling process at the connection of the center pillar

## S9

### Casement Window



#### PRODUCT PARAMETES

Water tightness	700 <sub>pa</sub>
Air tightness	1.2 <sub>m³/(m·h)</sub>
Wind pressure resistance	5K <sub>pa</sub>
Sound insulation performance	35 <sub>dB</sub>
U-Factor(U.S./1-P)	0.27
SHGC	0.22

**Glass:** Double Tempered Glass with argon gas  
5mm+27A+5mm  
(PVDF Aluminum Strip Between double glass)

**Profile:** 6063-T5 aluminum profile

**Profile Thickness:** 1.8MM

**Frame width:** 109MM

**Handle:** Customized non base safety Handle in Black and Silver

**Hinge:** Customized flat open friction Hinge

**Lock point:** Customized Black Zinc Alloy Six Point Lock

**Insulation strip:** Standard DERCHI insulation strip

**Opening Way:** Outward Opening / Awning

**Optional package:** New 48 Pack/New 88 Pack

**Sealing material:** EPDM rubber strip

**Available Size:** Opening Panel ( Width:350-700/Height:400-1600)

#### PRODUCT PROCESS

- Open the fan and fix the position using internal and external rubber strip technology
- Built in diamond mesh wire pressing process





# Y100

## Casement Window



### PRODUCT PARAMETERS

Water tightness	700 <sub>pa</sub>
Air tightness	1.2 <sub>m³/(m·h)</sub>
Wind pressure resistance	5K <sub>pa</sub>
Sound insulation performance	35 <sub>dB</sub>
U-Factor(U.S./I-P)	0.27
SHGC	0.20

**Glass:** Double Tempered Glass with argon gas  
5mm+27A+5mm  
(PVDF Aluminum Strip Between double glass)

**Profile:** 6063-T5 aluminum profile

**Profile Thickness:** 1.8MM

**Frame width:** 100MM

**Handle:** Customized non base safety Handle in Black and Silver

**Hinge:** Customized flat open friction Hinge

**Lock point:** Customized Black Zinc Alloy Six Point Lock

**Insulation strip:** Standard DERCHI insulation strip

**Opening Way:** Outward Opening / Awning

**Optional package:** New 48 Pack/New 88 Pack

**Sealing material:** EPDM rubber strip

**Available Size:** Opening Panel ( Width:350-750/Height:400-1500)

### PRODUCT PROCESS

- Open the fan and fix the position using internal and external rubber strip technology
- Floor drain drainage technology
- Whole frame two-component injection molding process

# R8Y

## Casement Window



### PRODUCT PARAMETERS

Water tightness	700 <sub>pa</sub>
Air tightness	1.2 <sub>m³/(m·h)</sub>
Wind pressure resistance	5K <sub>pa</sub>
Sound insulation performance	35 <sub>dB</sub>
U-Factor(U.S./I-P)	0.27
SHGC	0.22

**Glass:** Double Tempered Glass with argon gas  
5mm+27A+5mm  
(PVDF Aluminum Strip Between double glass)

**Profile:** 6063-T5 aluminum profile

**Profile Thickness:** 1.8MM

**Frame width:** 118MM

**Handle:** WEHAG Handle in Black and Silver

**Hinge:** WEHAG 14 inches Hinge

**Lock point:** Black Six Point Lock(Invention patent)

**Insulation strip:** Standard BAIYUNYILE insulation strip

**Opening Way:** Outward Opening / Awning

**Optional package:** New 48 Pack/New 88 Pack

**Sealing material:** EPDM rubber strip

**Available Size:** Opening Panel ( Width:350-750/Height:400-1600)

### PRODUCT PROCESS

- Open the fan and fix the position using internal and external rubber strip technology
- Built in diamond mesh wire pressing process
- Whole frame two-component injection molding process





# K9Y

## Casement Window



### PRODUCT PARAMETES

Water tightness	700 <sub>pa</sub>
Air tightness	1.2 <sub>m<sup>3</sup>/(m·h)</sub>
Wind pressure resistance	5K <sub>pa</sub>
Sound insulation performance	35 <sub>dB</sub>
U-Factor(U.S./1-P)	0.23
SHGC	0.20

**Glass:** Double Tempered Glass with argon gas  
5mm+27A+5mm  
(PVDF Aluminum Strip Between double glass)

**Profile:** 6063-T5 aluminum profile

**Profile Thickness:** 2.0MM

**Frame width:** 136MM

**Handle:** WEHAG Handle in Black and Silver

**Hinge:** WEHAG 14 inches Hinge

**Lock point:** Black Six Point Lock(Invention patent)

**Insulation strip:** Standard BAIYUNYILE insulation strip

**Opening Way:** Outward Opening / Awning

**Optional package:** New 48 Pack/New 88 Pack

**Sealing material:** EPDM rubber strip

**Available Size:** Opening Panel ( Width:350-750/Height:400-1600)

### PRODUCT PROCESS

- Open the fan and fix the position using internal and external rubber strip technology
- Built in diamond mesh wire pressing process
- Whole frame two-component injection molding process

# E5N

## Inwards opening window



### PRODUCT PARAMETES

Water tightness	700 <sub>pa</sub>
Air tightness	1.2 <sub>m<sup>3</sup>/(m·h)</sub>
Wind pressure resistance	5K <sub>pa</sub>
Sound insulation performance	35 <sub>dB</sub>
U-Factor(U.S./1-P)	0.32
SHGC	0.25

**Glass:** Double Tempered Glass with argon gas  
5mm+27A+5mm  
(PVDF Aluminum Strip Between double glass)

**Profile:** 6063-T5 aluminum profile

**Profile Thickness:** 2.0MM

**Frame width:** 85MM

**Handle:** Customized non base safety Handle in Black and Silver

**Hinge:** Customized flat open friction Hinge

**Hardware:** Customized version 180° Tilt and Turn Accessories

**Insulation strip:** Standard DERCHI insulation strip

**Opening Way:** Tilt and Turn/Inward opening

**Optional package:** New 48 Pack/New 88 Pack

**Sealing material:** EPDM rubber strip

**Available Size:** Opening Panel ( Width:480-850/Height:600-1800)

### PRODUCT PROCESS

- Open the fan and fix the position using internal and external rubber strip technology
- Built in diamond mesh wire pressing process
- Whole frame two-component injection molding process





## E4N

### Inwards opening window



#### PRODUCT PARAMETERS

Water tightness	700 <sub>pa</sub>
Air tightness	1.2 <sub>m³/(m·h)</sub>
Wind pressure resistance	5K <sub>pa</sub>
Sound insulation performance	35 <sub>dB</sub>
U-Factor(U.S./I-P)	0.27
SHGC	0.22

**Glass:** Double Tempered Glass with argon ags  
5mm+27A+5mm  
(PVDF Aluminum Strip Between double glass)

**Profile:** 6063-T5 aluminum profile

**Profile Thickness:** 2.0MM

**Frame width:** 94MM

**Handle:** Customized non base safety Handle in Black and Sliver

**Hinge:** Customized flat open friction Hinge

**Hardware:** Customized version 180° Tilt and Turn Accessories

**Insulation strip:** Standard DERCHI insulation strip

**Opening Way:** Tilt and Turn/Inward opening

**Optional package:** New 48 Pack/New 88 Pack

**Sealing material:** EPDM rubber strip

**Available Size:** Opening Panel ( Width:480-850/Height:600-2400)

#### PRODUCT PROCESS

- Open the fan and fix the position using internal and external rubber strip technology
- Built in diamond mesh wire pressing process
- Whole frame two-component injection molding process

## E6N

### Inwards opening window



#### PRODUCT PARAMETERS

Water tightness	700 <sub>pa</sub>
Air tightness	1.2 <sub>m³/(m·h)</sub>
Wind pressure resistance	5K <sub>pa</sub>
Sound insulation performance	35 <sub>dB</sub>
U-Factor(U.S./I-P)	0.23
SHGC	0.20

**Glass:** Double Tempered Glass with argon ags  
5mm+27A+5mm  
(PVDF Aluminum Strip Between double glass)

**Profile:** 6063-T5 aluminum profile

**Profile Thickness:** 2.0MM

**Frame width:** 103MM

**Handle:** WEHAG Handle in Black and Sliver

**Hardware:** WEHAG 180° Tilt and Turn Accessories

**Insulation strip:** Standard BAIYUNYILE insulation strip

**Opening Way:** Tilt and Turn/Inward opening

**Optional package:** New 48 Pack/New 88 Pack

**Sealing material:** EPDM rubber strip

**Available Size:** Opening Panel ( Width:480-850/Height:600-2400)

#### PRODUCT PROCESS

- Open the fan and fix the position using internal and external rubber strip technology
- Built in diamond mesh wire pressing process
- Whole frame two-component injection molding process





# K5N

## Inwards opening window



### PRODUCT PARAMETES

Water tightness	700 <sub>pa</sub>
Air tightness	1.2 <sub>m³/(m·h)</sub>
Wind pressure resistance	5K <sub>pa</sub>
Sound insulation performance	35 <sub>dB</sub>
U-Factor(U.S./1-P)	0.23
SHGC	0.20

**Glass:** Double Tempered Glass with argon gas  
6mm+16A+6mm  
(PVDF Aluminum Strip Between double glass)

**Profile:** 6063-T5 aluminum profile

**Profile Thickness:** 2.0MM

**Frame width:** 114MM

**Handle:** WEHAG Handle in Black and Silver

**Hardware:** WEHAG 90° Tilt and Turn Accessories

**Insulation strip:** Standard DERCHI insulation strip

**Opening Way:** Tilt and Turn/Inward opening

**Sealing material:** EPDM rubber strip

**Available Size:** Opening Panel ( Width:510-850/Height:600-2400)

### PRODUCT PROCESS

- Open the fan and fix the position using internal and external rubber strip technology
- Built in diamond mesh wire pressing process
- Whole frame two-component injection molding process
- Glass glue filling process at the connection of the center pillar

# T1

## Hung Window



### PRODUCT PARAMETES

Water tightness	350 <sub>pa</sub>
Air tightness	1.5 <sub>m³/(m·h)</sub>
Wind pressure resistance	5K <sub>pa</sub>
Sound insulation performance	30 <sub>dB</sub>
U-Factor(U.S./1-P)	0.32
SHGC	0.25

**Glass:** Double Tempered Glass with argon gas  
5mm+9A+5mm  
(PVDF Aluminum Strip Between double glass)

**Profile:** 6063-T5 aluminum profile

**Profile Thickness:** 1.5MM

**Frame width:** 105MM

**Hardware:** Caldwell Rolling type puller

**Hardware:** Caldwell CRESCENT LOCK

**Opening Way:** lift and pull

**Available Size:** Opening Panel ( Width:400-750/Height:520-1500)

### PRODUCT PROCESS

- Glass hollow can have built-in (20 × 10) grid bars, but cannot have external grid bars installed





## E2T

### Thermal Break Sliding Window



#### PRODUCT PARAMETERS

Water tightness	450 <sub>pa</sub>
Air tightness	4.5 <sub>m³/(m·h)</sub>
Wind pressure resistance	5K <sub>pa</sub>
Sound insulation performance	30 <sub>dB</sub>
U-Factor(U.S./I-P)	0.27
SHGC	0.22

**Glass:** Double Tempered Glass with argon gas  
5mm+12A+5mm  
(PVDF Aluminum Strip Between double glass)

**Profile:** 6063-T5 aluminum profile

**Profile Thickness:** 1.8MM

**Frame width:** Two Tracks:94MM / Three Tracks:121MM

**FLUSH LOCK:** Side Mounted Hidden Automatic Hook Lock

**LOCK POINT:** Automatic Hook Lock

**Insulation strip:** Standard DERCHI insulation strip

**Opening Way:** Two Tracks / Three Tracks

**Sealing material:** EPDM rubber strip

**Available Size:** Opening Panel (Width:350-1100/Height:500-2100)

#### PRODUCT PROCESS

- The overall use of internal and external gluing process
- The track adopts an internal high and external low high low track design
- Embedded design of window sash material
- The exterior design of the window sash material structure does not have a cavity





# E5T

## Thermal Break Sliding Window



### PRODUCT PARAMETES

Water tightness	450 <sub>pa</sub>
Air tightness	4.5 <sub>m<sup>3</sup>/(m·h)</sub>
Wind pressure resistance	5K <sub>pa</sub>
Sound insulation performance	30 <sub>dB</sub>
U-Factor(U.S./1-P)	0.27
SHGC	0.22

**Glass:** Double Tempered Glass with argon gas  
5mm+12A+5mm  
(PVDF Aluminum Strip Between double glass)

**Profile:** 6063-T5 aluminum profile

**Profile Thickness:** 1.8MM

**Frame width:** Four tracks:95MM/Five tracks:133MM

**FLUSH LOCK:** Side mounted concealed automatic lock

**Hardware:** Customized silent pulley

**Insulation strip:** Standard DERCHI insulation strip

**Opening Way:** Four tracks/Five tracks

**Sealing material:** EPDM rubber strip\Silicified wool strips

**Available Size:** Opening Panel ( Width:500-2000/Height:500-1400)

### PRODUCT PROCESS

- The track adopts an internal high and external low high low track design
- Embedded design of window sash material
- The glass fan adopts a double row wheel design
- Strengthen the anti drop structure of handrails

# G41

## Translating Sealed window



### PRODUCT PARAMETES

Water tightness	700 <sub>pa</sub>
Air tightness	1.2 <sub>m<sup>3</sup>/(m·h)</sub>
Wind pressure resistance	5K <sub>pa</sub>
Sound insulation performance	35 <sub>dB</sub>
U-Factor(U.S./1-P)	0.23
SHGC	0.20

**Glass:** Double Tempered Glass with argon gas  
5mm+20A+5mm  
(PVDF Aluminum Strip Between double glass)

**Profile:** 6063-T5 aluminum profile

**Profile Thickness:** frame 2.0MM ,sash 2.2MM

**Frame width:** 132MM

**Handle:** YALE There is a base handle

**Hardware:** YALE Side pressure hardware

**Insulation strip:** Standard BAIYUNYILE insulation strip

**Opening Way:** One opening and one fixing/Two opening and one fixing/  
Two opening and two fixing/Fixed up and down

**Sealing material:** EPDM rubber strip

**Available Size:** Opening Panel ( Width:600-1500/Height:100-2600)

### PRODUCT PROCESS

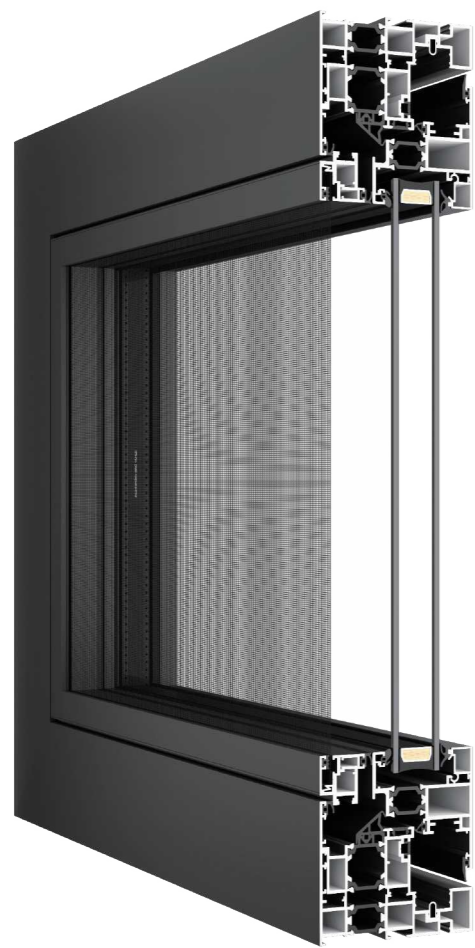
- Open the fan and fix the position using internal and external rubber strip technology





# G46

## Slide and Tilt window



### PRODUCT PARAMETES

Water tightness	500 <sub>pa</sub>
Air tightness	1.8 <sub>m<sup>3</sup>/(m·h)</sub>
Wind pressure resistance	5K <sub>pa</sub>
Sound insulation performance	35 <sub>dB</sub>
U-Factor(U.S./1-P)	0.23
SHGC	0.20

**Glass:** Double Tempered Glass with argon ags  
5mm+22A+5mm  
(PVDF Aluminum Strip Between double glass)

**Profile:** 6063-T5 aluminum profile

**Profile Thickness:** 1.75MM

**Frame width:** 100MM

**Handle:** HOPE No pedestal handle

**Hardware:** HOPE Customized slide and tilt window lock point lock seat

**Optional package:** New 32 Pack

**Insulation strip:** Standard DERCHI insulation strip

**Opening Way:** Slide and Tilt

**Sealing material:** EPDM rubber strip

**Available Size:** Opening Panel ( Width:600-1700/Height:800-2500)

### PRODUCT PROCESS

·Open the fan and fix the position using internal and external rubber strip technology

# Q3

## Sling Doors



### PRODUCT PARAMETES

Water tightness	450 <sub>pa</sub>
Air tightness	4.5 <sub>m<sup>3</sup>/(m·h)</sub>
Wind pressure resistance	5K <sub>pa</sub>
Sound insulation performance	30 <sub>dB</sub>
U-Factor(U.S./1-P)	0.38
SHGC	0.25

**Glass:** Double Tempered Glass with argon ags  
5mm+12A+5mm  
(PVDF Aluminum Strip Between double glass)

**Profile:** 6063-T5 aluminum profile

**Profile Thickness:** frame 1.4MM , door leaf 1.8MM

**Frame width:** Four tracks:95MM/Five tracks:133MM

**Handle:** Aluminum alloy hook lock/clasp

**Lock point:** 304 Stainless Steel Single Hook Lock

**Insulation strip:** Standard DERCHI insulation strip

**Opening Way:** Four Tracks / Five Tracks

**Optional package:** New 47 Pack / 70 Pack / 75 Pack

**Sealing material:** EPDM rubber strip

**Available Size:** Opening Panel ( Width:600-1400/Height:800-2400)

### PRODUCT PROCESS

·The entire window adopts internal and external gluing technology  
·Embedded Design  
·The glass adopts a double row wheel design





## Q5

### Sling Doors



#### PRODUCT PARAMETES

Water tightness	300 pa
Air tightness	4.5 m <sup>3</sup> /(m·h)
Wind pressure resistance	4.5K pa
Sound insulation performance	30 dB
U-Factor(U.S./1-P)	0.38
SHGC	0.22

**Glass:** Double Tempered Glass with argon ags  
5mm+20A+5mm  
(PVDF Aluminum Strip Between double glass)

**Profile:** 6063-T5 aluminum profile

**Profile Thinckness:** frame 2.2MM , door leaf 1.8MM

**Frame width:** Two tracks 135mm / Three tracks 205mm

**Gasket:** China Brand JIANGYIN HAIDA

**Opening Way:** Two Tracks / Three Tracks

**Optional package:** New 47 Pack/70 Pack/75 Pack/100 Pack

**Sealing material:** EPDM rubber strip, siliconized wool strip

**Flush lock:** PAG Aluminum Hook Lock

**Lock point:** 304 Stainless Steel Single Hook Lock

**Available Size:** Opening Panel ( Width:580-1500/Height:800-2800)

#### PRODUCT PROCESS

- The overall use of internal and external gluing process
- Yarn fan thread pressing structure
- Fan material simple style design
- Embedded design of fan material
- The overlapping part of the hook cover is designed with a sealing strip

## 135F

### Sliding door



#### PRODUCT PARAMETES

Water tightness	350 pa
Air tightness	3.0 m <sup>3</sup> /(m·h)
Wind pressure resistance	4.5K pa
Sound insulation performance	32 dB
U-Factor(U.S./1-P)	0.28
SHGC	0.20

**Glass:** Double Tempered Glass with argon ags  
5mm+27A+5mm  
(PVDF Aluminum Strip Between double glass)

**Profile:** 6063-T5 aluminum profile

**Profile Thinckness:** 2.2MM

**Frame width:** Two tracks 135mm / Three tracks 205mm

**Handle:** PAG Aluminum alloy hook lock/clasp

**Hardware:** 304 stainless steel single hook lock point lock seat

**Optional package:** New 47 Pack / 70 Pack / 75 Pack / 100 Pack

**Opening Way:** Two tracks/Three tracks

**Sealing material:** EPDM rubber strip

**Available Size:** Opening Panel ( Width:580-2000/Height:800-3000)

#### PRODUCT PROCESS

- The overall use of internal and external gluing process
- Embedded design of fan material
- The lock point lock seat is made of stainless steel material
- Floor drain drainage design





# 143

## Sliding door



### PRODUCT PARAMETES

Water tightness	300 <sub>pa</sub>
Air tightness	4.5 <sub>m<sup>3</sup>/(m·h)</sub>
Wind pressure resistance	4.5K <sub>pa</sub>
Sound insulation performance	30 <sub>dB</sub>
U-Factor(U.S./1-P)	0.28
SHGC	0.20

**Glass:** Double Tempered Glass with argon ags  
5mm+27A+5mm  
(PVDF Aluminum Strip Between double glass)

**Profile:** 6063-T5 aluminum profile

**Profile Thinckness:** 2.2MM

**Frame width:** Two tracks 143mm / Three tracks 217mm

**Handle:** PAG Aluminum alloy hook lock/clasp

**Hardware:** 304 stainless steel single hook lock point lock seat

**Insulation strip:** Standard DERCHI insulation strip

**Optional package:** New 47 Pack / 70 Pack / 75 Pack / 100 Pack

**Opening Way:** Two tracks/Three tracks

**Sealing material:** EPDM rubber strip

**Available Size:** Opening Panel ( Width:600-2500/Height:800-3000)

### PRODUCT PROCESS

- The overall use of internal and external gluing process
- Embedded design of fan material
- Enhanced mid lift design
- Yarn fan thread pressing structure



# Q15

## Heavy Sliding door



### PRODUCT PARAMETES

Water tightness	450 <sub>pa</sub>
Air tightness	4.5 <sub>m<sup>3</sup>/(m·h)</sub>
Wind pressure resistance	4.5K <sub>pa</sub>
Sound insulation performance	35 <sub>dB</sub>
U-Factor(U.S./1-P)	0.28
SHGC	0.20

**Glass:** Double Tempered Glass with argon ags  
6mm+25A+6mm  
(PVDF Aluminum Strip Between double glass)

**Profile:** 6063-T5 aluminum profile

**Profile Thinckness:** frame 2.0MM , door leaf 3.0MM

**Frame width:** Two Tracks:129MM

**LOCK POINT:** Panoramic door dedicated one letter lock

**Hardware:** Panoramic door integrated handle

**Insulation strip:** Standard BAIYUNYILE insulation strip

**Opening Way:** Two Tracks / Three Tracks

**Sealing material:** EPDM rubber strip

**Available Size:** Opening Panel ( Width:1300-4000/Height:2000-6000)

### PRODUCT PROCESS

- Design of Embedded Micro Seam Linear Track
- Design of high rail sunken hidden drainage
- The overlap is sealed with a strip of wool
- Seal the hooked edge with sealing tape





# 103

## Sliding door

### PRODUCT PARAMETERS

Water tightness	300 <sub>pa</sub>
Air tightness	4.5 <sub>m³/(m·h)</sub>
Wind pressure resistance	3K <sub>pa</sub>
Sound insulation performance	30 <sub>dB</sub>
U-Factor(U.S./I-P)	0.39
SHGC	0.25

**Glass:** 8MM tempered glass

**Profile:** 6063-T5 aluminum profile

**Profile Thickness:** frame 1.3MM , door leaf 2.0MM

**Frame width:** Two Tracks:103MM / Three Tracks:149MM

**Handle:** Extremely narrow specialized aluminum alloy handle

**Hardware:** Customized silent two wheel pulley

**Opening Way:** Two Tracks / Three Tracks

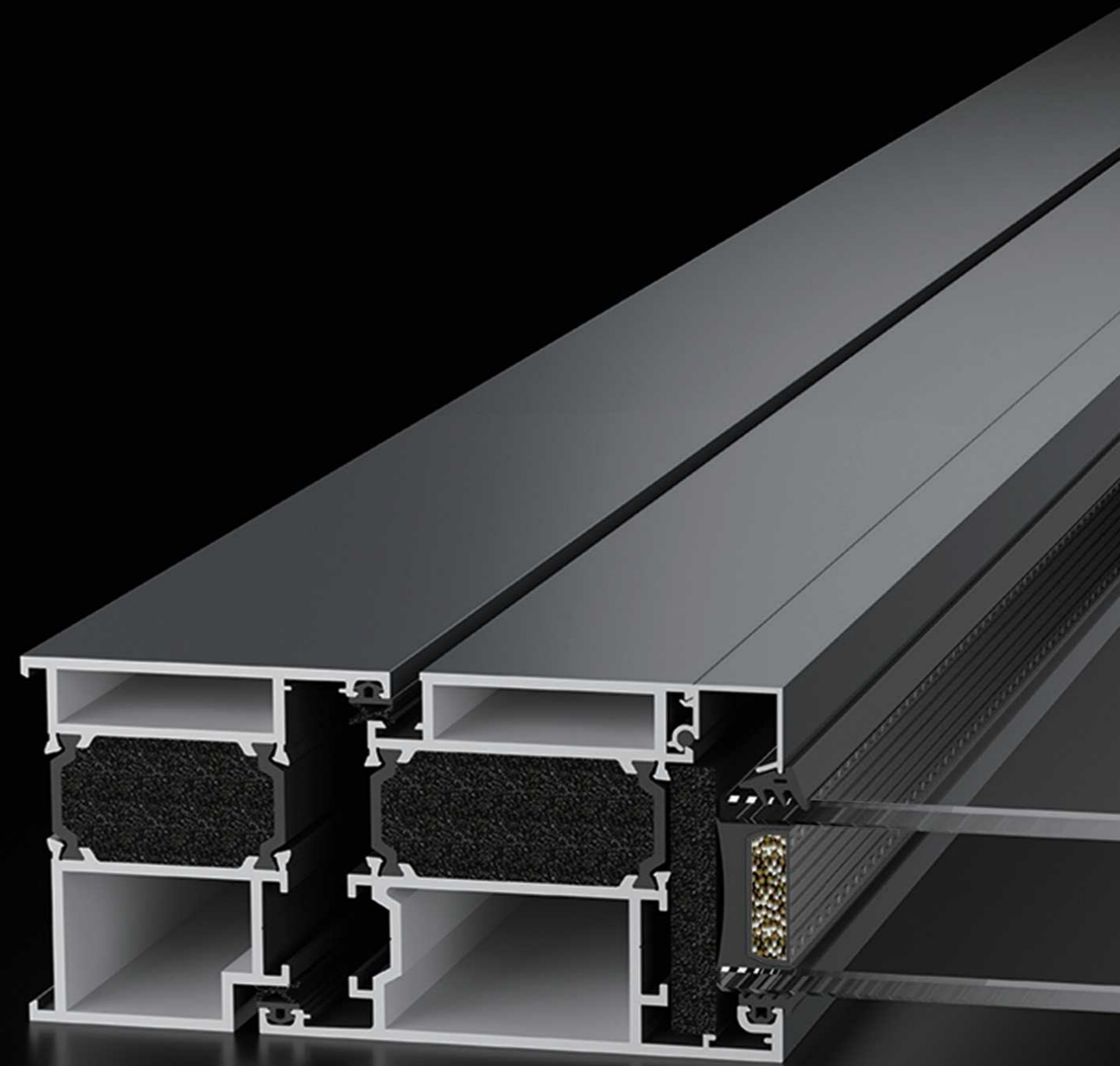
**Optional package:** New 32 Pack

**Sealing material:** EPDM rubber strip

**Available Size:** Opening Panel ( Width:580-1200/Height:800-2600)

### PRODUCT PROCESS

- Dark glue process
- Narrow fan design







# P50

## Swing door



### PRODUCT PARAMETES

Water tightness	300 <sub>pa</sub>
Air tightness	5 <sub>m<sup>3</sup>/(m·h)</sub>
Wind pressure resistance	3K <sub>pa</sub>
Sound insulation performance	37 <sub>dB</sub>
U-Factor(U.S./1-P)	0.39
SHGC	0.25

**Glass:** double glazing:5mm+12A+5mm  
Single Glazed:8MM tempered glass

**Profile:** 6063-T5 aluminum profile

**Profile Thickness:** frame 1.45MM , door leaf 1.2MM

**Frame width:** 54MM

**Handle:** DERCHI custom handle

**Hardware:** DERCHI customized hinges

**Optional package:** New 32 Pack

**Opening Way:** Open externally and open internally

**Sealing material:** EPDM rubber strip

**Available Size:** Opening Panel ( Width:600-850/Height:1800-2500)

### PRODUCT PROCESS

- Opening the fan adopts gluing process
- fixing position adopts pressing glue strip process

# P103

## Interior Swing door



### PRODUCT PARAMETES

Water tightness	450 <sub>pa</sub>
Air tightness	4.5 <sub>m<sup>3</sup>/(m·h)</sub>
Wind pressure resistance	5K <sub>pa</sub>
Sound insulation performance	30 <sub>dB</sub>
U-Factor(U.S./1-P)	0.38
SHGC	0.25

**Glass:** Double Tempered Glass with argon gas  
5mm+27A+5mm  
(PVDF Aluminum Strip Between double glass)

**Profile:** 6063-T5 aluminum profile

**Profile Thickness:** 2.0MM

**Frame width:** 103MM

**Handle:** ShenZhen HOPE double-sided handle

**Hardware:** ShenZhen HOPE column hinge

**Insulation strip:** Standard BAIYUNYILE insulation strip

**Optional package:** New 32 Pack

**Opening Way:** Single door, double door, parent-child door

**Sealing material:** EPDM rubber strip

**Available Size:** Opening Panel ( Width:350-1100/Height:800-2800)

### PRODUCT PROCESS

- Opening the fan adopts gluing process
- fixing position adopts pressing glue strip process





78

Folding door



PRODUCT PARAMETES

Water tightness	450 pa
Air tightness	1.8 m <sup>3</sup> /(m·h)
Wind pressure resistance	4.5K pa
Sound insulation performance	30 dB
U-Factor(U.S./1-P)	0.38
SHGC	0.22

**Glass:** Double Tempered Glass with argon ags  
5mm+27A+5mm  
(PVDF Aluminum Strip Between double glass)

**Profile:** 6063-T5 aluminum profile

**Profile Thickness:** 1.6MM

**Frame width:** 78MM

**Handle:** Kersseberg Handle in Black or Sliver

**Hinge:** Kersseberg Hinge in Black or Sliver

**Lock point:** Kersseberg Specialized locking point

**Insulation strip:** Standard BAIYUNYILE insulation strip

**Optional package:** New 47 Pack/70 Pack/75 Pack/100 Pack

**Sealing material:** EPDM rubber strip

**Available Size:** Opening Panel ( Width:500-800/Height:1000-2800)

PRODUCT PROCESS

· Adopting internal and external gluing process



80

Folding door



PRODUCT PARAMETES

Water tightness	350 pa
Air tightness	1.8 m <sup>3</sup> /(m·h)
Wind pressure resistance	4.5K pa
Sound insulation performance	35 dB
U-Factor(U.S./1-P)	0.28
SHGC	0.22

**Glass:** Double Tempered Glass with argon ags  
5mm+20A+5mm  
(PVDF Aluminum Strip Between double glass)

**Profile:** 6063-T5 aluminum profile

**Profile Thickness:** 2.0MM

**Frame width:** 80MM

**Handle:** CMECH Handle in Black or Sliver

**Hardware:** CMECH Hinge in Black or Sliver

**Lock point:** CMECH Specialized locking point

**Insulation strip:** Standard BAIYUNYILE insulation strip

**Optional package:** New 47 Pack/70 Pack/75 Pack/100 Pack

**Sealing material:** EPDM rubber strip

**Available Size:** Opening Panel ( Width:500-850/Height:1900-3800)

PRODUCT PROCESS

· Adopting internal and external gluing process





# 93

## Folding door

### PRODUCT PARAMETES

Water tightness	450 <sub>pa</sub>
Air tightness	1.8 <sub>m<sup>3</sup>/(m·h)</sub>
Wind pressure resistance	4.5K <sub>pa</sub>
Sound insulation performance	30 <sub>dB</sub>
U-Factor(U.S./I-P)	0.28
SHGC	0.22

**Glass:** Double Tempered Glass with argon ags  
5mm+27A+5mm  
(PVDF Aluminum Strip Between double glass)

**Profile:** 6063-T5 aluminum profile

**Profile Thickness:** 2.0MM

**Frame width:** 93MM

**Handle:** Kersseberg Handle in Black or Sliver

**Hinge:** Kersseberg Hinge in Black or Sliver

**Lock point:** Kersseberg Specialized locking point

**Insulation strip:** Standard BAIYUNYILE insulation strip

**Optional package:** New 47 Pack/70 Pack/75 Pack/100 Pack

**Sealing material:** EPDM rubber strip

**Available Size:** Opening Panel ( Width:500-850/Height:1000-3800)

### PRODUCT PROCESS

· Adopting internal and external gluing process



# Z3

## Pivot door

### PRODUCT PARAMETES

Water tightness	700 <sub>pa</sub>
Air tightness	1.2 <sub>m<sup>3</sup>/(m·h)</sub>
Wind pressure resistance	5K <sub>pa</sub>
Sound insulation performance	35 <sub>dB</sub>
U-Factor(U.S./I-P)	0.28
SHGC	0.22

**Glass:** Double Tempered Glass with argon ags  
8mm+21A+8mm  
(PVDF Aluminum Strip Between double glass)

**Profile:** 6063-T5 aluminum profile

**Profile Thickness:** frame 2.5MM , door leaf 3.0MM

**Frame width:** 129MM

**Handle:** Guangqi comes with its own armrest design

**Hardware:** Customized central axis accessories

**Opening Way:** Rotate and open horizontally

**Sealing material:** EPDM rubber strip

**Available Size:** Central axis door Opening Panel  
( Width:900-2700/Height:2350-4500)  
Pivot door Opening Panel  
( Width:900-1350/Height:2350-4500)

### PRODUCT PROCESS

· Adopting internal and external gluing process





# OTHER PRODUCT SERIES



## 150

### Curtain wall series



#### PRODUCT PARAMETES

Water tightness	500 <sub>pa</sub>
Air tightness	1.8 <sub>m<sup>3</sup>/(m·h)</sub>
Wind pressure resistance	4K <sub>pa</sub>
Sound insulation performance	40 <sub>dB</sub>
U-Factor(U.S./1-P)	0.38
SHGC	0.22

**Glass:** Double Tempered Glass with argon ags  
6mm+12A+6mm(LOW-E)  
(PVDF Aluminum Strip Between double glass)

**Profile:** 6063-T5 aluminum profile

**Profile Thickness:** 3.0MM

**Frame width:** 205MM

**Handle:** KINLONG Handle

**Hardware:** Multi point lock with limit

**Insulation strip:** Standard BAIYUNYILE insulation strip

**Sealing material:** EPDM rubber strip

**Available Size:** Opening Panel ( Width:700-1500/Height:800-1500)

#### PRODUCT PROCESS

- Vertical visible and horizontal hidden structure
- The glass panel adopts structural adhesive
- The same brand of weather resistant adhesive as the structural adhesive is used between glass and glass





# 120

## Sun Room

### PRODUCT PARAMETES

**Glass:** Roof:5mm+1.14PVB+5mm  
Side : 5mm+9A+5mm

**Profile:** 6063-T5 aluminum profile

**Profile Thickness:** 3.0MM

**Available Size:** The maximum single grid on the top is 1square meter

### OTHER OPTIONAL ITEMS

- Select electric sunroof and steel gauze integrated electric sunroof
- Choose 150\*150 Roman columns
- Use 27A electric sunshade system (5+27A+5+1.14PVB+5)
- H-type remote control, H-type receiver, H-type 2A transformer



Flat top



Inclined roof



Diamond top



Triangular roof



Arc top



# 138

## Sun Room

### PRODUCT PARAMETES

**Glass:** Roof:5mm+1.14PVB+5mm  
Side : 5mm+9A+5mm

**Profile:** 6063-T5 aluminum profile

**Profile Thickness:** 3.0MM

**Available Size:** The maximum single grid on the top is 1square meter

### OTHER OPTIONAL ITEMS

- Select electric sunroof and steel gauze integrated electric sunroof
- Choose 150\*150 Roman columns
- Use 27A electric sunshade system (5+27A+5+1.14PVB+5)
- H-type remote control, H-type receiver, H-type 2A transformer



Flat top



Inclined roof



Diamond top



Triangular roof



Arc top





# 150

## Sun Room

### PRODUCT PARAMETES

**Glass:** Roof:5mm+1.14PVB+5mm  
Side : 5mm+9A+5mm

**Profile:** 6063-T5 aluminum profile

**Profile Thickness:** 4.0MM

**Available Size:** The maximum single grid on the top is 1square meter

### OTHER OPTIONAL ITEMS

- Select electric sunroof and steel gauze integrated electric sunroof
- Choose 150\*150 Roman columns
- Use 27A electric sunshade system (5+27A+5+1.14PVB+5)
- H-type remote control, H-type receiver, H-type 2A transformer



# Skylight



Product type	Manual Sunroof	Power sunroof	Move the sunroof horizontally
Profile specifications	70*100*1.8mm	70*100*1.8mm	80*230*3.0mm
Processing technology	Seamless welding	Seamless welding	Seamless welding
Customized size	Single sash ≤ 1.5 m <sup>2</sup>	Single sash ≤ 1.5 m <sup>2</sup>	Width ≤ 4 meters
Glass configuration	Glass groove 25mm	Glass groove 25mm	Glass groove 27mm
Installation angle	0-90°	0-90°	0-10°
Standard configuration	Hardware stainless steel hinges/handles	External motor, remote control	Built in hidden motor and remote control



Flat top



Inclined roof



Diamond top



Triangular roof



Arc top



# SHOWER ROOM SERIES



**D851** Double sliding door



**D853** One solid one live shower room



**D854** One solid two linkage shower room



**D856** One fixed one open shower room



**D858** Two solid one live shower room



**D859** T-shaped rotating shaft shower room



**D860** Diamond hinge shower enclosure



**D864** Diamond shaped sliding door shower room



**D861** Diamond shower room



**D865** Sector shower room



**D866** One dual purpose shower room

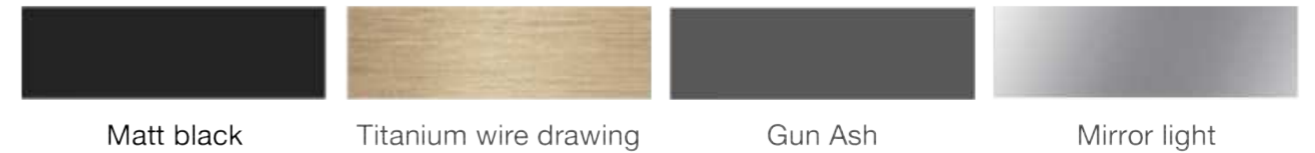


**D867** Fixed frame shower room

## PRODUCT PARAMETES

DESCRIPTION	Materials	304 stainless steel
	Color	Mirror light,Dumb gray,Gun Ash
	Hanger pulley	304 fine-cast double balance wheel
	Glass Thickness	8mm / 10mm Clear Glass
	Standard Height	2000mm
	Specification	Non-standard custom

## STAINLESS STEEL COLOR PLATE



Matt black

Titanium wire drawing

Gun Ash

Mirror light

## PVC SOLID WATER RETAINING STRIP



Matt black

Gun Ash

Cloud pulls gray

China black

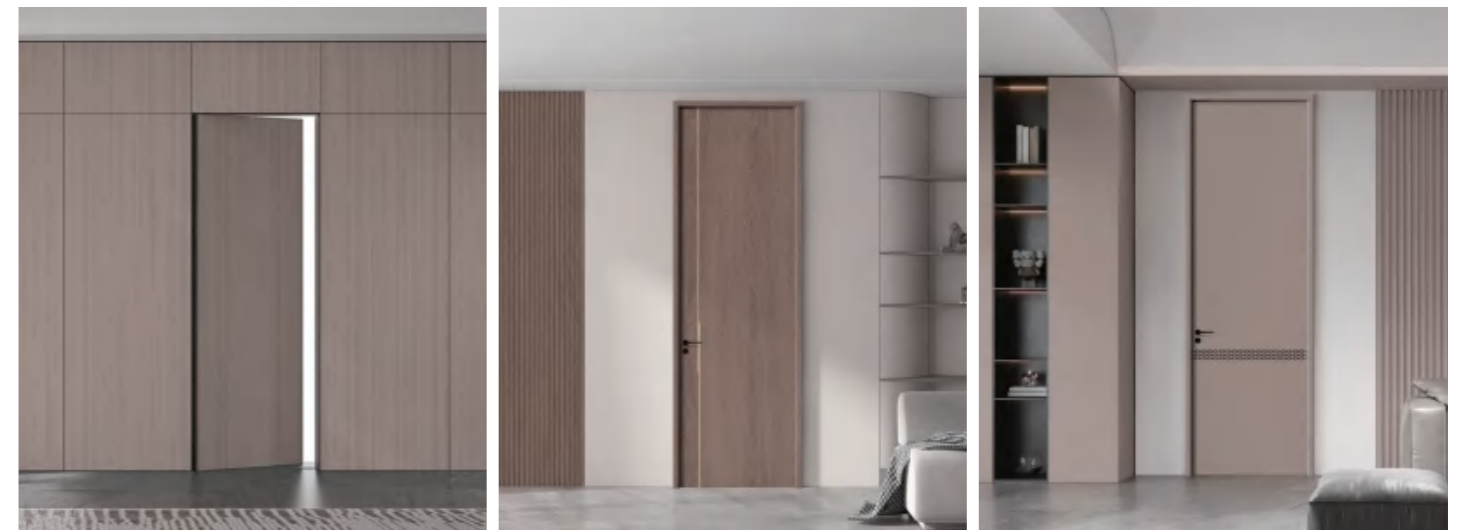
China black



# ENTRANCE DOOR



# WOODEN DOOR







AUTOMATIC  
GARAGE DOORS

AUTOMATIC GARAGE DOORS

PRODUCT PARAMETES

SERIES	Automatic Garage Doors
PROFILE THICKNESS	2.5mm aluminum profile thickness
CONTROL MODEL	Remote Control ( Standard),Manual
OPENER	800N/1000N/1200N/1500N/1800N (Based on doorway's size)
GLASS	5mm tempered glass ; Clear glass ; Frosted Glass (Standard)
HINGES	2.5mm plate galvanized steel
ROLLERS	Standard (2" or 3"), Heavy Duty (2" or 3")







ALUMINUM SHUTTER

ALUMINUM SHUTTER

PRODUCT PARAMETES

DESCRIPTION	ALUMINUM THICKNESS	1.4mm
-------------	--------------------	-------

PRODUCT PARAMETES

DESCRIPTION	ALUMINUM THICKNESS	1.4mm
	GLASS STANDARD	Double glazing 5mm+12A+5mm

GLASS LOUVRE

GLASS LOUVRE

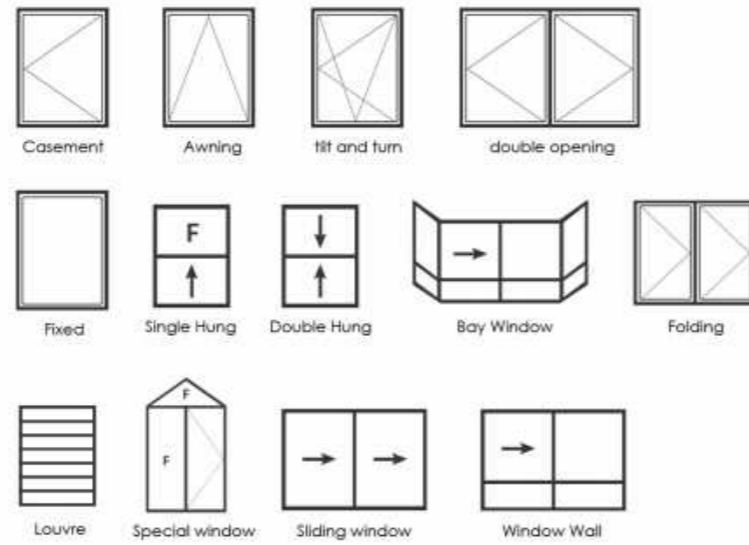




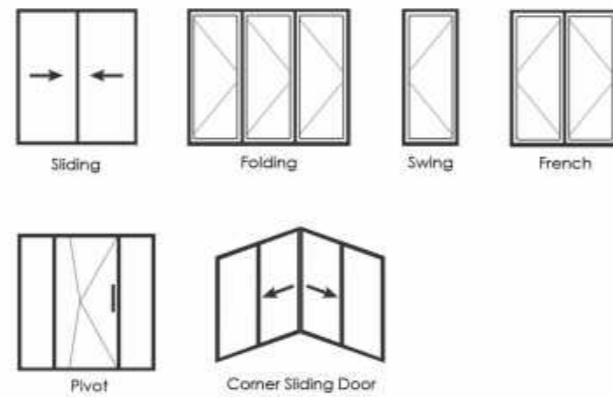
# CUSTOMIZE ANY ALUMINUM DOORS AND WINDOWS DESIGN

Please send your drawings and requirements and we will customize them for you

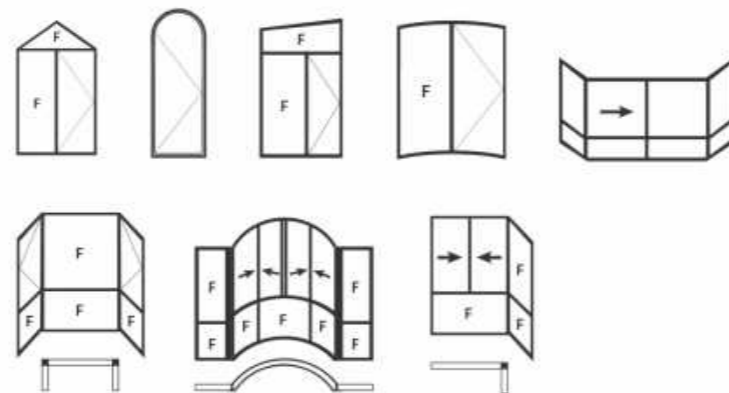
## WINDOW



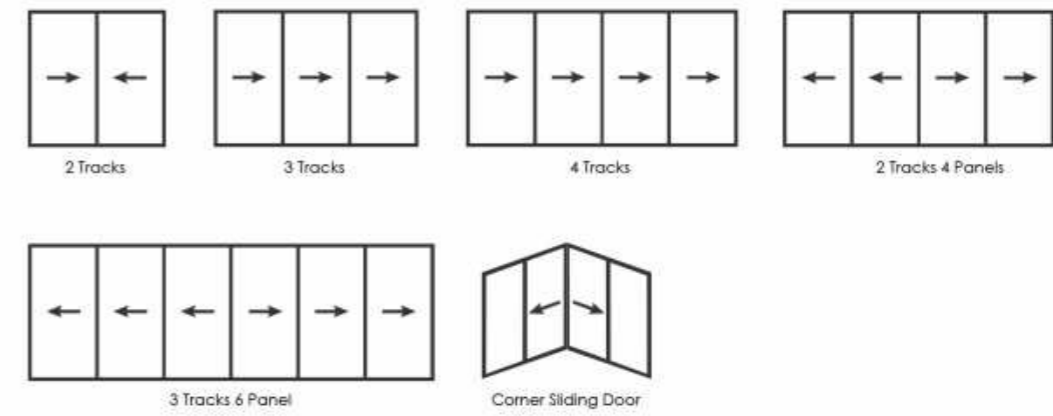
## DOOR



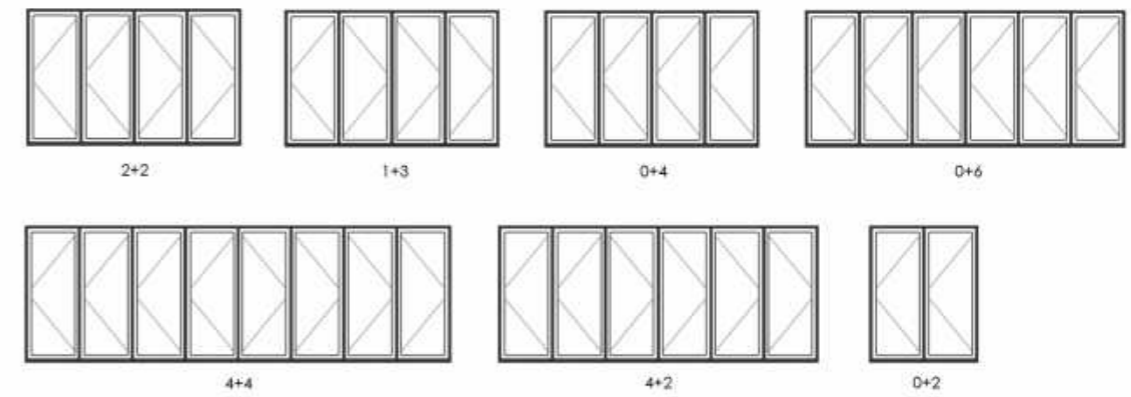
## SPECIAL



## SLIDING WINDOW / DOOR SERIES



## FOLDING SERIES



## SWING DOOR SERIES

